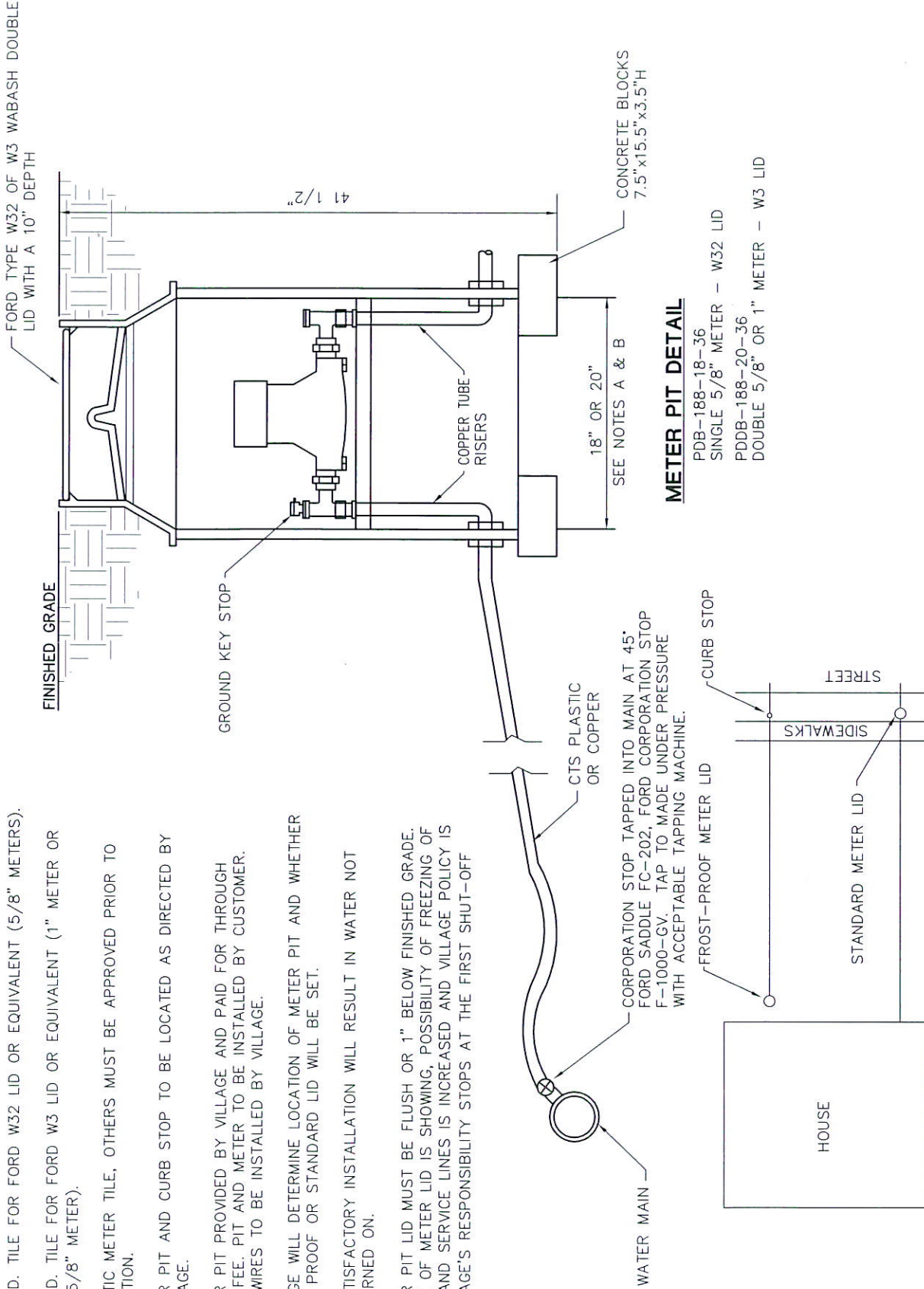


**NOTES**

- A. 18" I.D. TILE FOR FORD W32 LID OR EQUIVALENT (5/8" METERS).
- B. 20" I.D. TILE FOR FORD W3 LID OR EQUIVALENT (1" METER OR DOUBLE 5/8" METER).
- C. PLASTIC METER TILE, OTHERS MUST BE APPROVED PRIOR TO INSTALLATION.
- D. METER PIT AND CURB STOP TO BE LOCATED AS DIRECTED BY THE VILLAGE.
- E. METER PIT PROVIDED BY VILLAGE AND PAID FOR THROUGH TAPPING FEE. PIT AND METER TO BE INSTALLED BY CUSTOMER. REMOTE WIRES TO BE INSTALLED BY VILLAGE.
- F. VILLAGE WILL DETERMINE LOCATION OF METER PIT AND WHETHER A FROST PROOF OR STANDARD LID WILL BE SET.
- G. UNSATISFACTORY INSTALLATION WILL RESULT IN WATER NOT BEING TURNED ON.
- H. METER PIT LID MUST BE FLUSH OR 1" BELOW FINISHED GRADE. IF FRAME OF METER LID IS SHOWING, POSSIBILITY OF FREEZING OF METERS AND SERVICE LINES IS INCREASED AND VILLAGE POLICY IS THE VILLAGE'S RESPONSIBILITY STOPS AT THE FIRST SHUT-OFF VALVE.



**METER PIT DETAIL**

PDB-188-18-36  
 SINGLE 5/8" METER - W32 LID  
 PDDB-188-20-36  
 DOUBLE 5/8" OR 1" METER - W3 LID

**METER PIT INSTALLATION  
 FROST-PROOF LID**

REVISIONS:	DATE
AUG 1999	APPROVED:
MAR. 2003	MAY 1997
JULY 2008	PAGE No.