

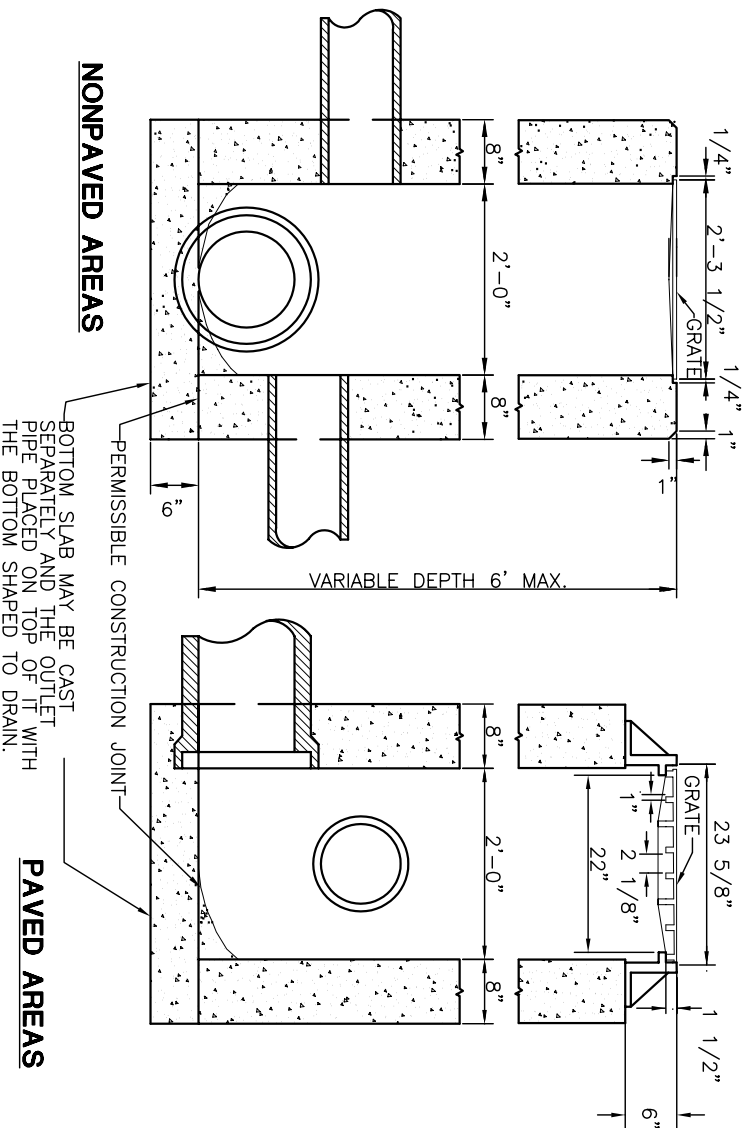
ALL GRATE EDGES TO BE ROUNDED 1/4" RADIUS

**PLAN**

**PLAN**

**2-2-B CATCH BASIN NOTES**

- A.** LOCATION AND ELEVATIONS WHEN GIVEN ON THE PLANS IS TOP CENTER OF THE GRATE. WHEN SIDE OPENINGS ARE PROVIDED, ELEVATION SHALL BE THE FLOW LINE OF THE SIDE INLET.
- B.** GRATE FOR NONPAVED AREAS SHALL BE EAST JORDAN IRON WORKS 5110 TYPE M3 OR NEENAH CATALOG NO. R-4859-C OR EQUIVALENT.
- C.** GRATE ELEVATION TO BE PLACED 4" TO 6" BELOW NORMAL DITCH RETURNING TO NORMAL 10' EACH SIDE OF BASIN.
- D.** CONCRETE, CAST-IN-PLACE, TO BE CLASS C. ALL PRECAST CONCRETE SHALL MEET THE REQUIREMENTS OF 706.13 WITH 6 ± 2% AIR VOID CONTENT IN THE HARDENED CONCRETE AND BE MARKED WITH CATCH BASIN NUMBER. OPENINGS FOR PIPES SHALL BE O.D. +2" WHEN FABRICATED OR FIELD CUT.
- E.** CATCH BASINS NOT PERMITTED IN PAVEMENT AREAS UNLESS USING A FRAME AND GRATE EQUIVALENT OF NEENAH CATALOG NO. R-3405 OR EAST JORDAN IRON WORKS NO. 5250.
- F.** FOR PIPES OVER 18" REFER TO ODOT CATCH BASIN 2-3 AND 2-4. FOR SIDE INLETS REFER TO ODOT CATCH BASIN 2-2-A.
- G.** CARE SHALL BE TAKEN WHEN CONNECTING TO AN EXISTING CATCH BASIN TO KEEP OPENING AS MINIMAL AS POSSIBLE. IF POSSIBLE, SAW CUT OR USE ROTARY HAMMER FOR OPENING TO MINIMIZE DAMAGE TO CATCH BASIN. PIPE TO INTRUDE INTO CATCH BASIN 1" ONLY AND PIPE MUST BE CUT PARALLEL TO CATCH BASIN. USE NONSHRINK GROUT AROUND PIPE INSIDE AND OUTSIDE OF CATCH BASIN TO SEAL BETWEEN PIPE AND CATCH BASIN.



**NONPAVED AREAS**

PERMISSIBLE CONSTRUCTION JOINT  
BOTTOM SLAB MAY BE CAST SEPARATELY AND THE OUTLET PIPE PLACED ON TOP OF IT WITH THE BOTTOM SHAPED TO DRAIN.

**PAVED AREAS**

VILLAGE OF  
ADA



**TYPE 2-2-B CATCH BASIN**

REVISIONS:  
NOV. 2004

DATE  
APPROVED:  
MAY 1997

PAGE No.

600-2