

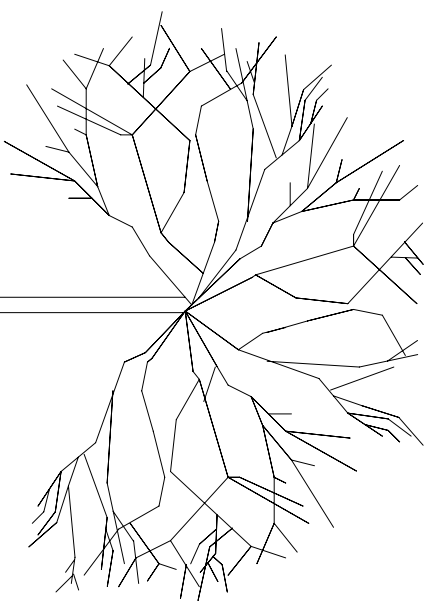
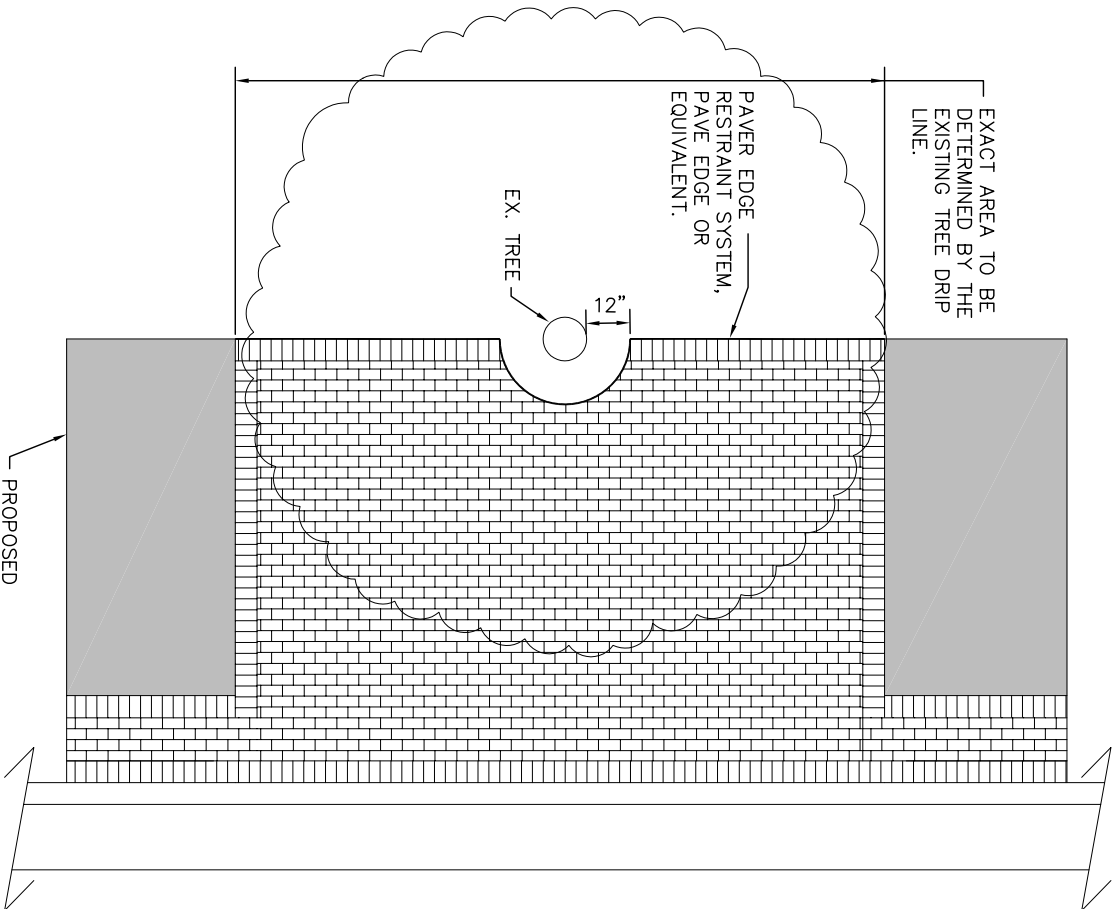
EXACT AREA TO BE DETERMINED BY THE EXISTING TREE DRIP LINE.

PAVER EDGE RESTRAINT SYSTEM, PAVE EDGE OR EQUIVALENT.

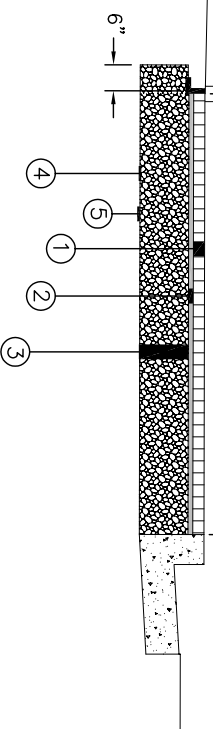
EX. TREE

12"

PROPOSED CONCRETE SIDEWALK



AREA TO BE INCLUDED IN ITEM SPEC., BRICK PAVING, WALK



- ① ITEM SPECIAL, BRICK PAVING, WALK (2-1/4" BRICK), (REFER TO VILLAGE FOR SPECIFICATIONS).
- ② 1 1/2" SAND LAYING COURSE. (REFER TO VILLAGE FOR SPECIFICATIONS).
- ③ ITEM 411, AGGREGATE BASE, SATURATED W/ WATER PRIOR TO COMPACTION. 4" MINIMUM - PEDESTRIAN 8" MINIMUM - VEHICULAR (IN 2 EQUAL 4" LIFTS)
- ④ ITEM SPECIAL, GEOTEXTILE FABRIC (REFER TO VILLAGE FOR SPECIFICATIONS).
- ⑤ ITEM 204, SUBGRADE COMPACTION

**BRICK WITH SAND TYPICAL SECTION**

VILLAGE OF

ADA



**STREETSCAPE BRICK WITH SAND LAYING COURSE TYPICAL SECTION**

REVISIONS:

DATE

APPROVED:  
JUNE 2006

PAGE No.

300-22