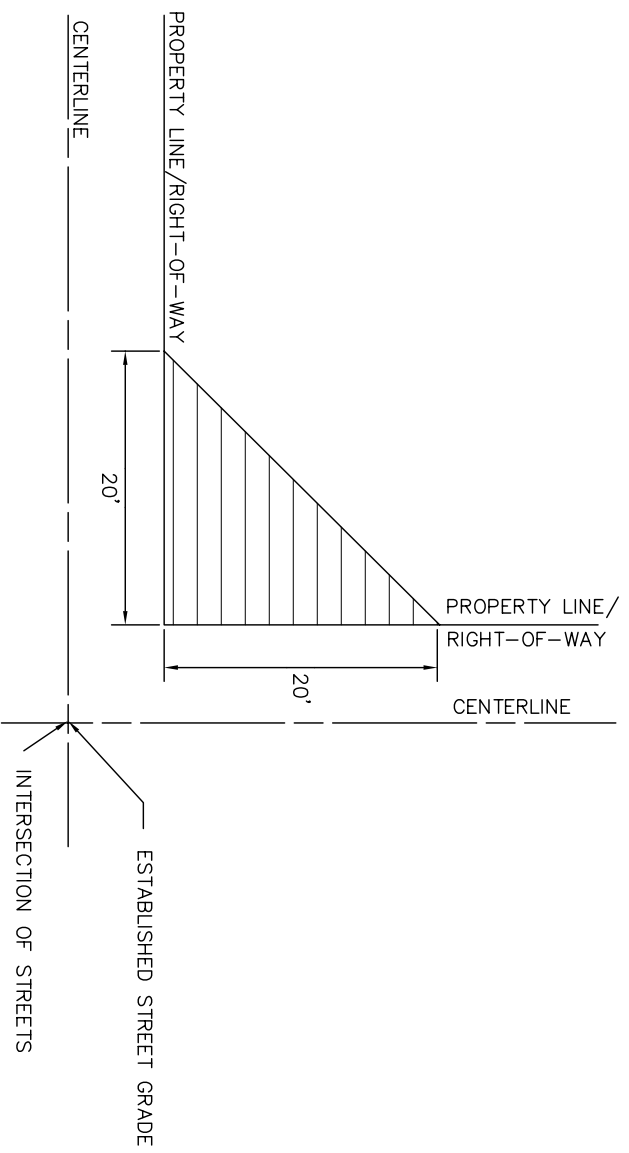
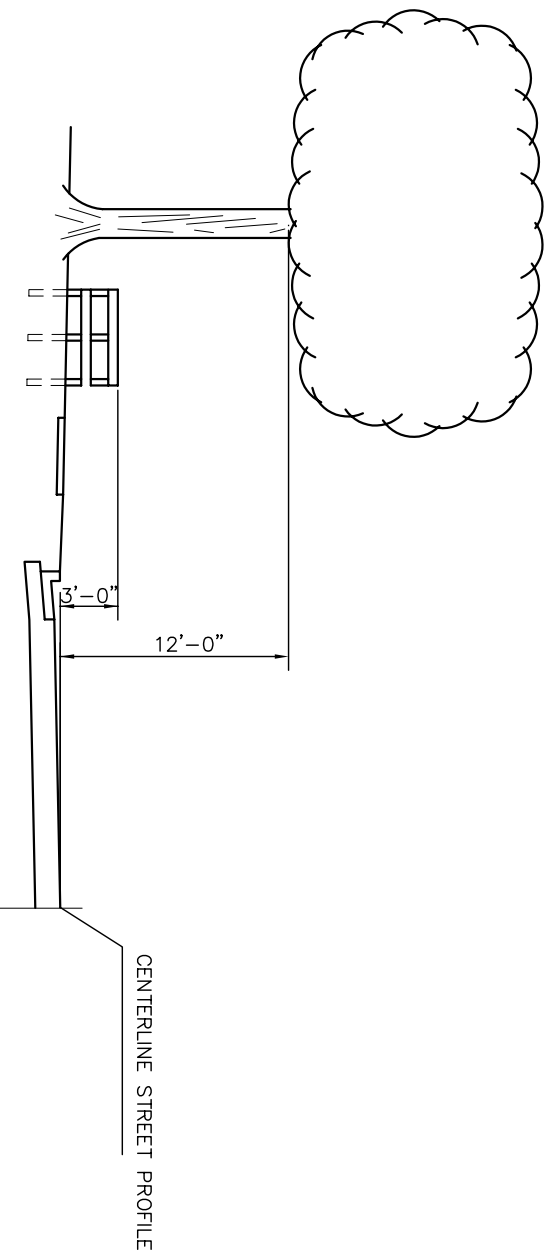


VISION CLEARANCE ON CORNER LOTS

REVISIONS:
 AUG. 1999
 DATE APPROVED:
 MAY 1997
 PAGE No.
 300-18



VISION CLEARANCE EXHIBIT

NOTES

THERE SHALL NOT BE ANYTHING ABOVE 3' OR BELOW 12" OF THE ESTABLISHED STREET GRADE IN THE TRIANGULAR SHADED AREA.